

THE SMART WAY™

**SAFWAY®**

# SafScan™ Digital Imaging

**Increasing Accuracy  
and Precision for Improved  
Performance and Results**



**SAFWAY®** Group

## By providing imaging and data with millimeter accuracy, SafScan™ creates a solid foundation for your access and industrial services projects.

Increased accuracy. Amazing precision. Better results. Savings in equipment, resources, transportation costs – and time. When you use SafScan™, Safway's 3D imaging capabilities, to help lay the groundwork for your next project, you can expect all this and more. From pre-planning to final project wrap-up, you can rely on SafScan™ to improve overall performance, efficiency and safety – on every level. That's **The Smart Way™**



**Safway Group companies serve the petrochemical, power, refining, oil and gas, marine, manufacturing, transportation and commercial construction industries worldwide.**

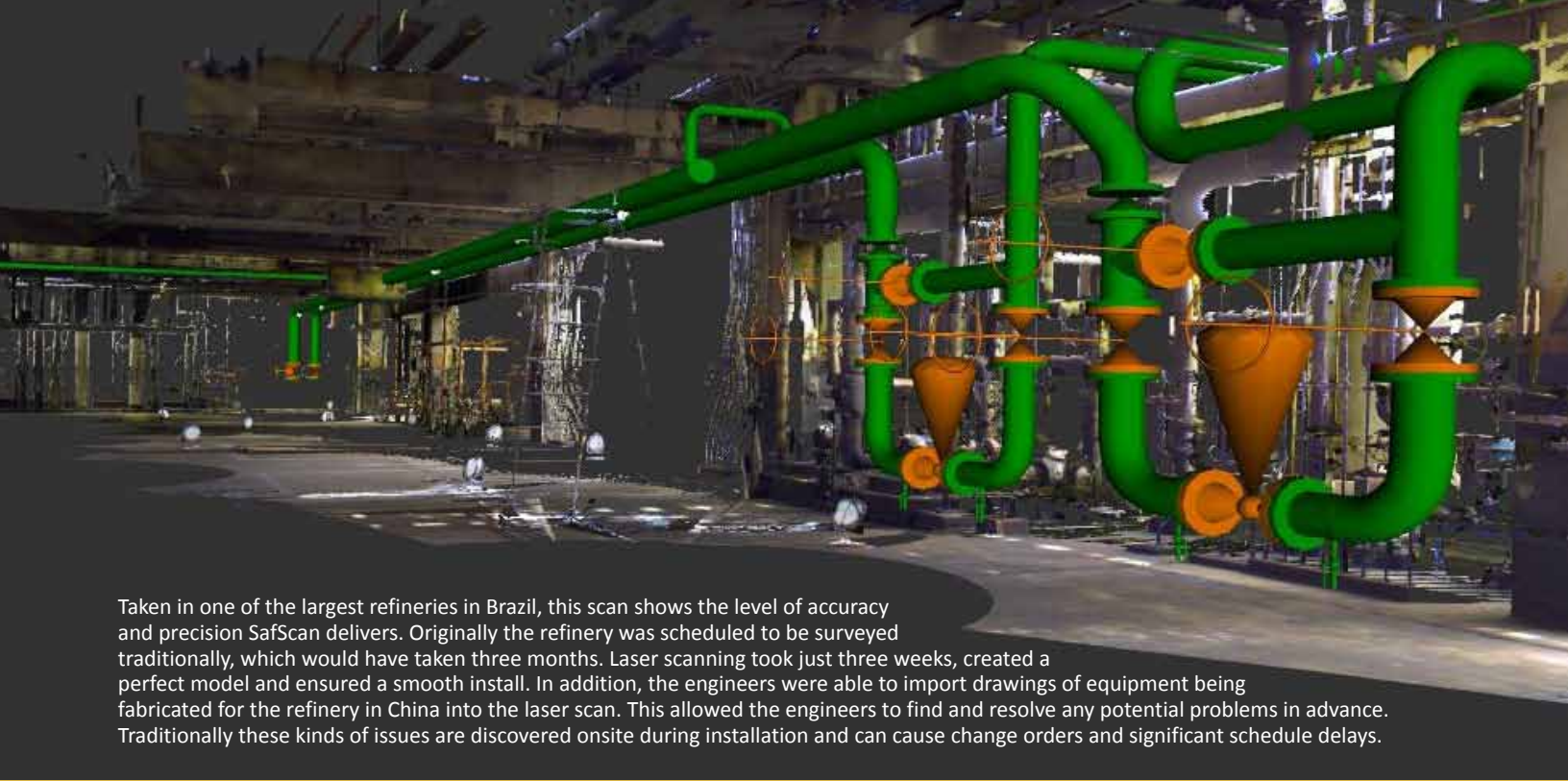
### **State-of-the-Art Laser Scanning**

At almost one million data points per second, SafScan™, Safway's state-of-the-art scanner, creates a precise, virtual copy of reality with millimeter accuracy that can be used to plan and design access, insulation or coatings solutions. Instead of relying on out-of-date drawings or estimated measurements to engineer, plan and manage your project, SafScan™ provides an amazingly precise, completely reliable baseline of information and data. By providing highly accurate images and measurements, SafScan™ provides a solid foundation for your projects ultimate success.

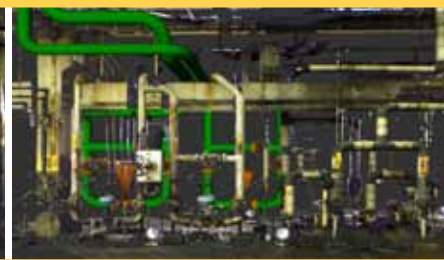
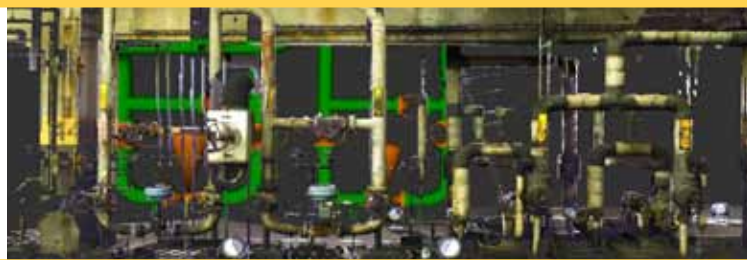
### **Engineered for Perfection**

Once we have solid, reliable and up-to-date information about your facility from SafScan™, our engineers – the largest in-house staff of licensed civil, structural and mechanical engineers in the industry – will go to work. Supported by state-of-the-art 3D Computer-Aided Design (CAD) and structural analysis software, Safway engineers will design and plan every aspect of your project to provide a comprehensive solution at the lowest total installed cost. By drawing on the most complete array of access and industrial service products and services available in the market – and in some cases developing





Taken in one of the largest refineries in Brazil, this scan shows the level of accuracy and precision SafScan delivers. Originally the refinery was scheduled to be surveyed traditionally, which would have taken three months. Laser scanning took just three weeks, created a perfect model and ensured a smooth install. In addition, the engineers were able to import drawings of equipment being fabricated for the refinery in China into the laser scan. This allowed the engineers to find and resolve any potential problems in advance. Traditionally these kinds of issues are discovered onsite during installation and can cause change orders and significant schedule delays.



custom, innovative solutions to meet the unique needs of a project or situation, many times the final engineered plan provides significant overall savings in labor costs, equipment and time.

### **The Safway Group Advantage**

The versatility of our products and services, however, is only part of the Safway Group advantage. By optimizing the resources and drawing on the experience and talent available through the various companies, which are part of the Safway Group, we can offer superior expertise, from access to industrial services. Safway Group companies include

**Redi Insulation, CL Coatings, Industrial Coatings & Fireproofing, Safway Atlantic, and Safway Services.** In addition, Safway's network of over 90 branches and company locations throughout North America, along with a system of distributors across South America, allows us to efficiently deliver products, services, local labor and expertise, when and where you need them.

Through **SMART Safety** practices, **SMART Planning** methodologies, **SMART Process** discipline and **SMART Technology** advancements, our **SMART People** come up with ideas every day – **THE SMART WAY™** – by collaborating and sharing knowledge and resources. The result? Safe, productive work sites – and the lowest total installed cost.



Safway has an outstanding track record in safety, highlighted most recently by “*EHS Today*” magazine, when we were named one of America’s safest companies.

**Project Management Ensures High Performance**

Once we begin to work on site, you can count on Safway to provide experienced, industry-specific project management and field supervision. From pre-job conferences and on-site inventory management to delivery of products and services, Safway’s project managers will oversee your entire job.

We also offer the **Safway Tracking System (STS)**, the most robust project management tool in the

industry. An exclusive system that captures and generates real-time data about your project’s equipment, labor, inspections and productivity, STS allows you to obtain up-to-the-minute project reports right on your computer. The Safway Tracking System provides complete transparency, to help you monitor and save time and money related to all access products and industrial services.

**Award-winning Safety**

And our bottom line? Safety. Safway has an outstanding track record in safety, highlighted most recently by “*EHS Today*” magazine, when we were named one of America’s safest companies. We can provide on-site safety expertise to assist in field management, including assurance of OSHA, Cal/OSHA and OH&S compliance. In addition, we are the only company with our own **Training University** and are able to provide **Site Safety Professionals**, who receive support from the largest in-house safety team in the industry.

**Let Us Partner With You**

By combining the Safway Group’s extensive product, service and technology resources,

together with our expertise and experience, we will work with you as a strategic partner, developing and implementing safe, high-quality, innovative and cost-effective multiservice solutions at the lowest total installed cost – **The Smart Way™**. Safway has been an industry leader since 1936, and provides sales, rental, training and skilled labor for projects of any size and scope. Safway Group companies serve the petrochemical, power, refining, oil and gas, marine, manufacturing, transportation and commercial construction industries worldwide.



Safway Group Holding LLC  
 N19 W24200 Riverwood Drive  
 Waukesha, WI 53188  
 Toll free: (800) 558-4772  
 Telephone: (262) 523-6500  
[www.safwaygroup.com](http://www.safwaygroup.com)

Safway Group Companies:

